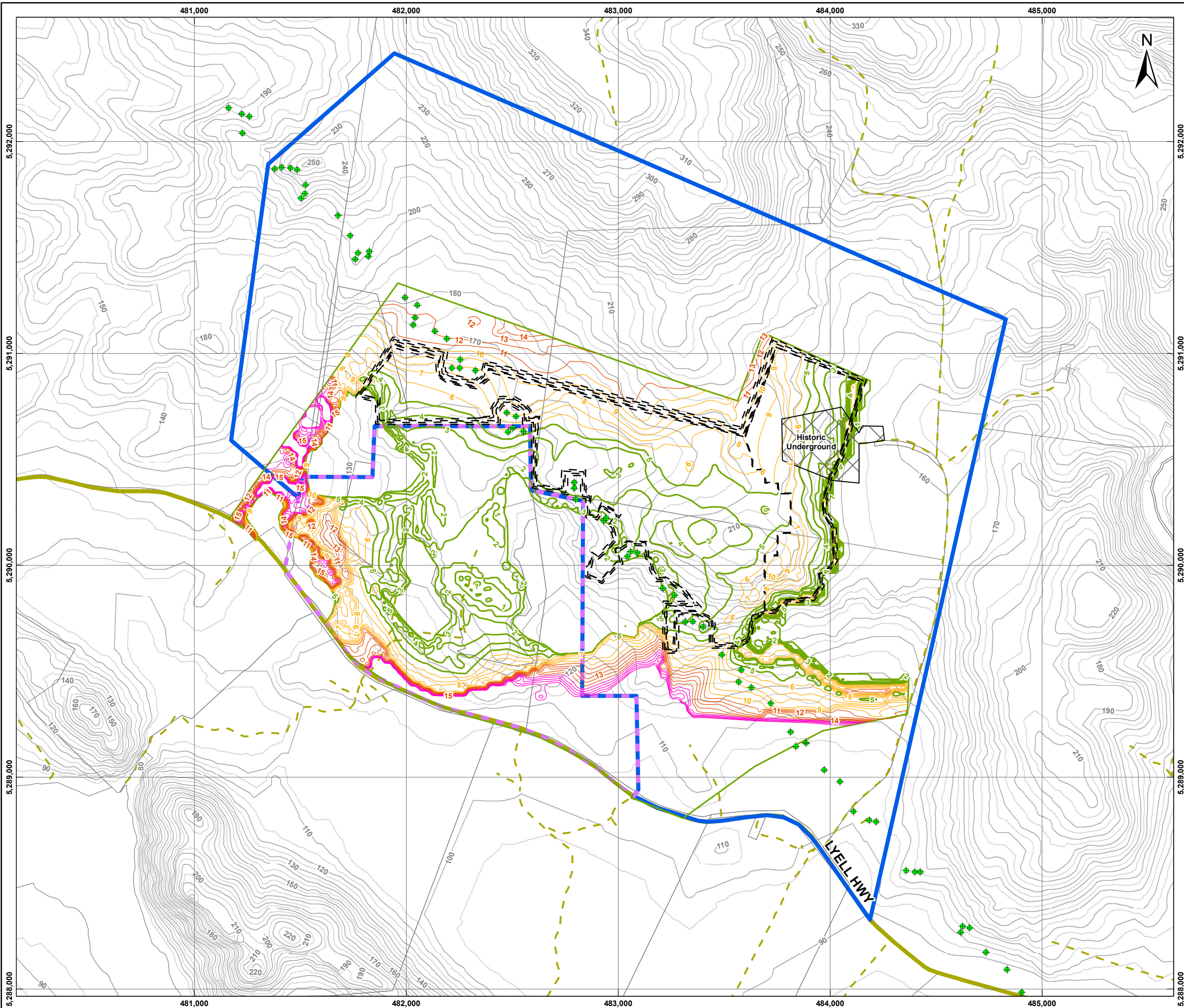
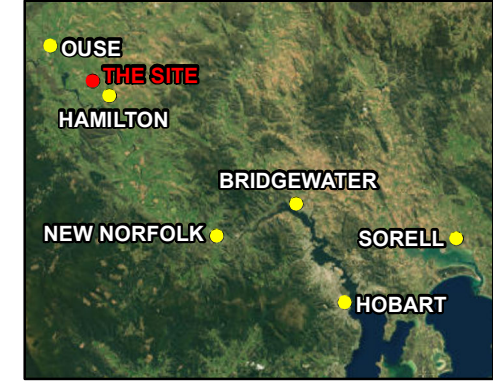


Information contained on this drawing is the copyright of Golder Associates Pty. Ltd. Unauthorised use or reproduction of this plan either wholly or in part without written permission infringes copyright. © Golder Associates Pty. Ltd.



LANGLOH DEPOSIT RETENTION
LICENCE APPLICATION
LANGLOH COAL PROJECT
HAMILTON, TASMANIA
INDICOAL MINING AUSTRALIA PTY LTD

CUMULATIVE ROM STRIPPING RATIO (bcm/ROM tonne)



- ### LEGEND
- #### Cumulative Strip Ratio
- 0 to 5:1
 - 6:1 to 10:1
 - 11:1 to 15:1
 - 16:1 to 20:1
- Historic Underground Mining
 - Proposed Site Boundary
 - Kimbloton Lease 1679 (held by Cornwall Coal)
 - Major Road
 - Road
 - Existing Topography Contour Interval = 10 m
 - Existing Topography Contour Interval = 5 m
 - Existing Power Pole

COPYRIGHT
World Imagery - Source: Esri, DigitalGlobe, GeoEye, i-cubed, USDA, USGS, AEX, Getmapping, Aerogrid, IGN, IGP, swisstopo, and the GIS User Community. Aerial image sourced from World Imagery, sourced 25.11.2014.

Township and road data sourced from MapInfo Street Pro.

0 100 200 400 600 800 1,000 metres

SCALE (at A3) 1:17,500
DATUM GDA 94, PROJECTION MGA Zone 55

PROJECT: 127613050
DATE: 27 NOV 2014
DRAWN: KB
CHECKED: AR

FIGURE 2

